

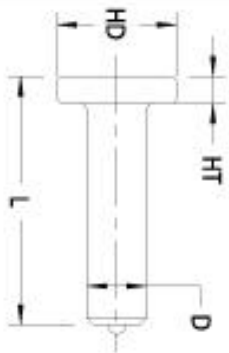
ASAP FASTENING SYSTEMS, INC.

SUPPLIES FOR INDUSTRY AND CONSTRUCTION

2013 SOUTH 37TH STREET • MILWAUKEE, WISCONSIN 53215

(414) 344-4500 • FAX (414) 344-4504

WWW.ASAPFASTENING.COM • EMAIL: SALES@ASAPFASTENING.COM



BEFORE WELD



AFTER WELD

TYPE **SC** STUD
SHEAR CONNECTOR - FULL WELD BASE
TYPE **F** FERRULE SUPPLIED

(NOTE #3)

D		L ^{*1}	STUD PART NUMBER ^{*2}	HD	HT	FD	FH	CHUCK PART NUMBER	LIGHT DUTY SPLIT		STANDARD COMBINATION ^{*4}
DIAMETER		MIN. LENGTH BEFORE WELD		HEAD DIAMETER	HEAD HEIGHT MIN.	WELD FILLET DIAMETER	WELD FILLET HEIGHT		FOOT PART NUMBER	GRIP PART NUMBER	FOOT AND GRIP
3/4	3-3/16	1011-12-051	1-1/4	3/8	1-1/16	1/4	8038	11125	8054	8127	
3/4	3-11/16	1011-12-059	1-1/4	3/8	1-1/16	1/4	8038	11125	8054	8127	
3/4	4-3/16	1011-12-067	1-1/4	3/8	1-1/16	1/4	8038	11125	8054	8127	
3/4	4-11/16	1011-12-075	1-1/4	3/8	1-1/16	1/4	8038	11125	8054	8127	
3/4	5-3/16	1011-12-083	1-1/4	3/8	1-1/16	1/4	8038	11125	8054	8127	
3/4	6-3/16	1011-12-099	1-1/4	3/8	1-1/16	1/4	8038	11125	8054	8127	
3/4	7-3/16	1011-12-115	1-1/4	3/8	1-1/16	1/4	8038	11125	8054	8127	
3/4	8-3/16	1011-12-131	1-1/4	3/8	1-1/16	1/4	8038	11125	8054	8127	
3/4	9-3/16	1011-12-147	1-1/4	3/8	1-1/16	1/4	8038	11125	8054	8127	
3/4	10-3/16	1011-12-163	1-1/4	3/8	1-1/16	1/4	8038	11125	8054	8127	

1.) STUDS ARE AVAILABLE IN ANY REQUIRED LENGTH ABOVE THE STANDARD MINIMUM.

2.) SEE PART NUMBER CONSTRUCTION DATA ON PAGE NO.3

3.) LISTED FERRULE IS FOR STANDARD FLAT DOWN HAND POSITION. SEE PAGE NO.5 FOR LISTING OF FERRULES USED IN OTHER APPLICATIONS.

4.) REQUIRES USE OF P/N 11101 DUAL LEG ADAPTOR.

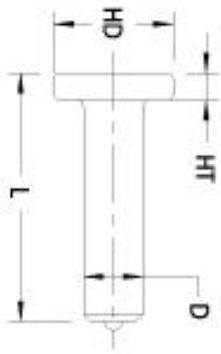
ASAP FASTENING SYSTEMS, INC.

SUPPLIES FOR INDUSTRY AND CONSTRUCTION

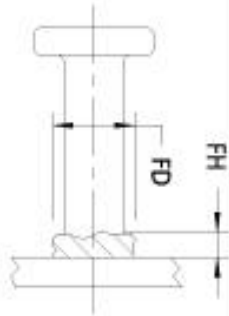
2013 SOUTH 37TH STREET • MILWAUKEE, WISCONSIN 53215

(414) 344-4500 • FAX (414) 344-4504

WWW.ASAPFASTENING.COM • EMAIL: SALES@ASAPFASTENING.COM



BEFORE WELD



AFTER WELD

TYPE **SC** STUD
SHEAR CONNECTOR - FULL WELD BASE
TYPE **F** FERRULE SUPPLIED

(NOTE #3)

BEFORE WELD		AFTER WELD					LIGHT DUTY SPLIT			STANDARD COMBINATION ^{*4}
D DIAMETER	L ^{*1} MIN. LENGTH BEFORE WELD	STUD PART NUMBER ^{*2}	HD HEAD DIAMETER	HT HEAD HEIGHT MIN.	FD WELD FILLET DIAMETER	FH WELD FILLET HEIGHT	CHUCK PART NUMBER	FOOT PART NUMBER	GRIP PART NUMBER	FOOT AND GRIP
7/8	3-11/16	1011-14-059	1-3/8	3/8	1-1/8	5/16	8041	11126	8055	8128
7/8	4-3/16	1011-14-067	1-3/8	3/8	1-1/8	5/16	8041	11126	8055	8128
7/8	5-3/16	1011-14-083	1-3/8	3/8	1-1/8	5/16	8041	11126	8055	8128
7/8	6-3/16	1011-14-099	1-3/8	3/8	1-1/8	5/16	8041	11126	8055	8128
7/8	7-3/16	1011-14-115	1-3/8	3/8	1-1/8	5/16	8041	11126	8055	8128
7/8	8-3/16	1011-14-131	1-3/8	3/8	1-1/8	5/16	8041	11126	8055	8128
7/8	9-3/16	1011-14-147	1-3/8	3/8	1-1/8	5/16	8041	11126	8055	8128
7/8	10-3/16	1011-14-163	1-3/8	3/8	1-1/8	5/16	8041	11126	8055	8128

1.) STUDS ARE AVAILABLE IN ANY REQUIRED LENGTH ABOVE THE STANDARD MINIMUM.

2.) SEE PART NUMBER CONSTRUCTION DATA ON PAGE NO.3

3.) LISTED FERRULE IS FOR STANDARD FLAT DOWN HAND POSITION. SEE PAGE NO.5 FOR LISTING OF FERRULES USED IN OTHER APPLICATIONS.

4.) REQUIRES USE OF P/N-11101 DUAL LEG ADAPTOR.

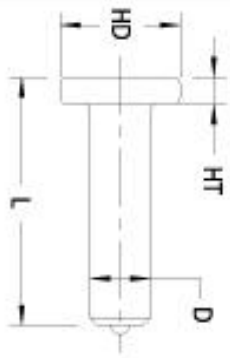
ASAP FASTENING SYSTEMS, INC.

SUPPLIES FOR INDUSTRY AND CONSTRUCTION

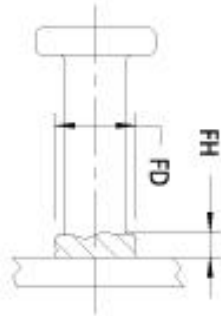
2013 SOUTH 37TH STREET • MILWAUKEE, WISCONSIN 53215

(414) 344-4500 • FAX (414) 344-4504

WWW.ASAPFASTENING.COM • EMAIL: SALES@ASAPFASTENING.COM



BEFORE WELD




AFTER WELD

TYPE **SC** STUD
SHEAR CONNECTOR - FULL WELD BASE
TYPE **F** FERRULE SUPPLIED

(NOTE #3)

STANDARD COMBINATION ^{*4}

D DIAMETER	L MIN. LENGTH BEFORE WELD	*1	STUD PART NUMBER	*2	HD HEAD DIAMETER	HT HEAD HEIGHT MIN.	FD WELD FILLET DIAMETER	FH WELD FILLET HEIGHT	CHUCK PART NUMBER	FOOT AND GRIP
1"	3-1/4		1011-16-052		1-5/8	1/2	1-1/4	3/8	8130	8129
1"	4-1/4		1011-16-068		1-5/8	1/2	1-1/4	3/8	8130	8129
1"	5-1/4		1011-16-084		1-5/8	1/2	1-1/4	3/8	8130	8129
1"	6-1/4		1011-16-100		1-5/8	1/2	1-1/4	3/8	8130	8129
1"	7-1/4		1011-16-116		1-5/8	1/2	1-1/4	3/8	8130	8129
1"	8-1/4		1011-16-132		1-5/8	1/2	1-1/4	3/8	8130	8129
1"	9-1/4		1011-16-148		1-5/8	1/2	1-1/4	3/8	8130	8129

- 1.)  STUDS ARE AVAILABLE IN ANY REQUIRED LENGTH ABOVE THE STANDARD MINIMUM.
- 2.) SEE PART NUMBER CONSTRUCTION DATA ON PAGE NO.3
- 3.) LISTED FERRULE IS FOR STANDARD FLAT DOWN HAND POSITION. SEE PAGE NO.5 FOR LISTING OF FERRULES USED IN OTHER APPLICATIONS.
- 4.) REQUIRES USE OF P/N-11101 DUAL LEG ADAPTOR.