

# ASAP FASTENING SYSTEMS, INC.

SUPPLIES FOR INDUSTRY AND CONSTRUCTION

2013 SOUTH 37TH STREET • MILWAUKEE, WISCONSIN 53215

(414) 344-4500 • FAX (414) 344-4504

WWW.ASAPFASTENING.COM • EMAIL: SALES@ASAPFASTENING.COM

HS11-1624

Allowable Max. Pressure

**104,380 lbs (52ton)**

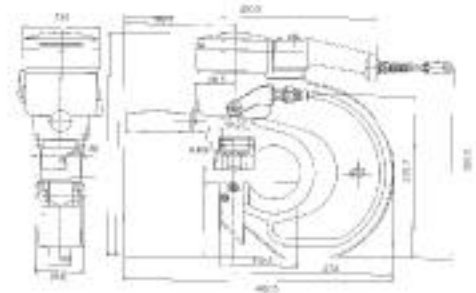
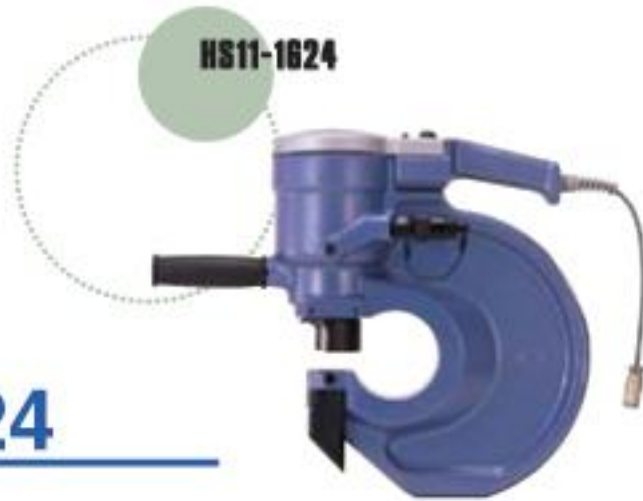
Max. Punching Thickness: 5/8"

304

Max. Punching Diameter: 15/16"

MODEL

**HS11-1624**



## Specifications

Model		HS11-1624	
Max. Throat Depth	inch (mm)	4-5/16" (110)	
Punching capacity	inch (mm)	Max. Punching Diameter	Max. Punching Thickness
Mild Steel A36		15/16" (24)	5/8" (16)
Stainless Steel 304		15/16" (24)	1/4" (6)
Hole Making Time		Punching Time 11.8 sec. Returning Time 5.7 sec.	
Allowable Max. Pressure		10,000 psi (700 kgf/cm <sup>2</sup> )	
Max. Output	lbs (ton)	104,380 (52)	
Ram Stroke	inch (mm)	1" (25)	
Mass (Weight)	lbs (kg)	66 (30)	

\*Can be modified to accept 1-1/16" punch & die. Consult factory.

## Standard Accessories for HS11-1624

- Hose kit assembly
- Hose cond assembly
- Sub handle assembly
- Tool box
- #12 Spanner wrench
- 22 mm "D" series punch & die
- Chip guard assembly
- Spanner