

ASAP FASTENING SYSTEMS, INC.

SUPPLIES FOR INDUSTRY AND CONSTRUCTION

2013 SOUTH 37TH STREET • MILWAUKEE, WISCONSIN 53215

(414) 344-4500 • FAX (414) 344-4504

WWW.ASAPFASTENING.COM • EMAIL: SALES@ASAPFASTENING.COM

HS06-1322

Allowable Max. Pressure

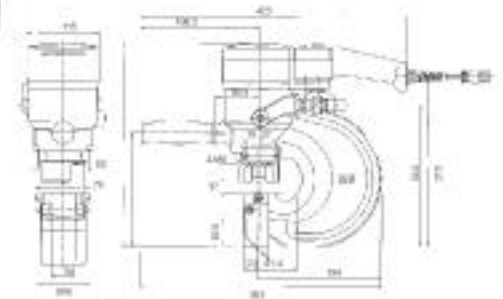
82,560 lbs (41ton)

Min. Punching Thickness: 1/2"

Min. Punching Diameter: 7/8"

MODEL

HS06-1322



Specifications

Model	HS06-1322		
Max. Throat Depth	inch (mm)	2-3/8" (60)	
Punching capacity	inch (mm)	Max. Punching Diameter	Max. Punching Thickness
Mild Steel A36		7/8" (22)	1/2" (13)
Stainless Steel 304		7/8" (22)	1/4" (6)
Hole Making Time	Punching Time 7.9 sec. Returning Time 3.4 sec.		
Allowable Max. Pressure	10,000 psi (700 kgf/cm ²)		
Max. Output	lbs (ton)	82,650 (41)	
Ram Stroke	inch (mm)	13/16" (21)	
Mass (Weight)	lbs (kg)	45 (20.5)	

Standard Accessories for HS06-1322

- Hose kit assembly
- Hose cord assembly
- Sub handle assembly
- Tool box
- 4 mm Allen wrench
- #12 Spanner wrench
- 22 mm "D" series punch & die
- Chip guard assembly
- Spanner