

ASAP FASTENING SYSTEMS, INC.

SUPPLIES FOR INDUSTRY AND CONSTRUCTION

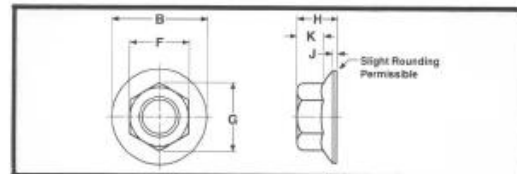
2013 SOUTH 37TH STREET • MILWAUKEE, WISCONSIN 53215

(414) 344-4500 • FAX (414) 344-4504

WWW.ASAPFASTENING.COM • EMAIL: SALES@ASAPFASTENING.COM

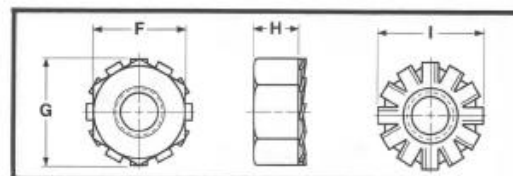
Dimensional Data

SERRATED FLANGE LOCK NUTS



| Nominal Size or Basic Major Diameter of Thread | F | | G | | B | | H | | K | J |
|--|--------------------|-------|----------------------|-------|-----------------|-------|---------------|-------|------------------|------------------|
| | Width Across Flats | | Width Across Corners | | Flange Diameter | | Nut Thickness | | Wrenching Length | Flange Thickness |
| | Max. | Min. | Max. | Min. | Max. | Min. | Max. | Min. | Min. | Max. |
| 6 0.1380 | 0.312 | 0.302 | 0.361 | 0.342 | 0.422 | 0.406 | 0.171 | 0.156 | 0.10 | 0.02 |
| 8 0.1640 | 0.344 | 0.334 | 0.397 | 0.381 | 0.469 | 0.452 | 0.203 | 0.187 | 0.13 | 0.02 |
| 10 0.1900 | 0.375 | 0.365 | 0.433 | 0.416 | 0.500 | 0.480 | 0.219 | 0.203 | 0.13 | 0.03 |
| 12 0.2160 | 0.438 | 0.428 | 0.505 | 0.488 | 0.594 | 0.574 | 0.236 | 0.222 | 0.14 | 0.04 |
| 1/4 0.2500 | 0.438 | 0.428 | 0.505 | 0.488 | 0.594 | 0.574 | 0.236 | 0.222 | 0.14 | 0.04 |
| 5/16 0.3125 | 0.500 | 0.489 | 0.577 | 0.557 | 0.680 | 0.660 | 0.283 | 0.268 | 0.17 | 0.04 |
| 3/8 0.3750 | 0.562 | 0.551 | 0.650 | 0.628 | 0.750 | 0.728 | 0.347 | 0.330 | 0.23 | 0.04 |
| 7/16 0.4375 | 0.688 | 0.675 | 0.794 | 0.768 | 0.937 | 0.910 | 0.395 | 0.375 | 0.26 | 0.04 |
| 1/2 0.5000 | 0.750 | 0.736 | 0.866 | 0.840 | 1.031 | 1.000 | 0.458 | 0.437 | 0.31 | 0.05 |
| 5/8 0.6250 | 0.938 | 0.922 | 1.083 | 1.051 | 1.281 | 1.248 | 0.569 | 0.545 | 0.40 | 0.05 |
| 3/4 0.7500 | 1.125 | 1.088 | 1.299 | 1.240 | 1.500 | 1.460 | 0.675 | 0.627 | 0.46 | 0.06 |

"K" LOCK NUTS



| Nominal Size or Basic Thread Diameter | F | | | G | | H | | I |
|---------------------------------------|--------------------|-------|-------|----------------------|-------|-----------|-------|-----------------|
| | Width Across Flats | | | Width Across Corners | | Thickness | | Washer Diameter |
| | Basic | Max. | Min. | Max. | Min. | Max. | Min. | Ref. |
| 4 0.1120 | 1/4 | 0.250 | 0.241 | 0.289 | 0.275 | 0.098 | 0.087 | 0.281 |
| 6 0.1380 | 5/16 | 0.312 | 0.302 | 0.361 | 0.344 | 0.114 | 0.102 | 0.344 |
| 8 0.1640 | 11/32 | 0.344 | 0.332 | 0.397 | 0.378 | 0.130 | 0.117 | 0.375 |
| 10 0.1900 | 3/8 | 0.375 | 0.362 | 0.433 | 0.413 | 0.130 | 0.117 | 0.406 |
| 1/4 0.2500 | 7/16 | 0.438 | 0.423 | 0.505 | 0.482 | 0.193 | 0.178 | 0.500 |
| 5/16 0.3125 | 1/2 | 0.500 | 0.489 | 0.577 | 0.557 | 0.273 | 0.258 | 0.578 |
| 3/8 0.3750 | 9/16 | 0.562 | 0.551 | 0.650 | 0.628 | 0.385 | 0.365 | 0.656 |